

OVERVIEW

The HI-CSS is a low-cost high performance monitoring system for coastal and border surveillance. Featuring an advanced 640 x 480 3rd gen. uncooled thermal sensor, the HI-CSS delivers unrivaled detection performance in all weather conditions for continuous long range observation during day and night. The high quality and 24/7 imaging capability of the thermal camera can provide early warning and threat assessment to ensure efficient and effective response to emerging threats.

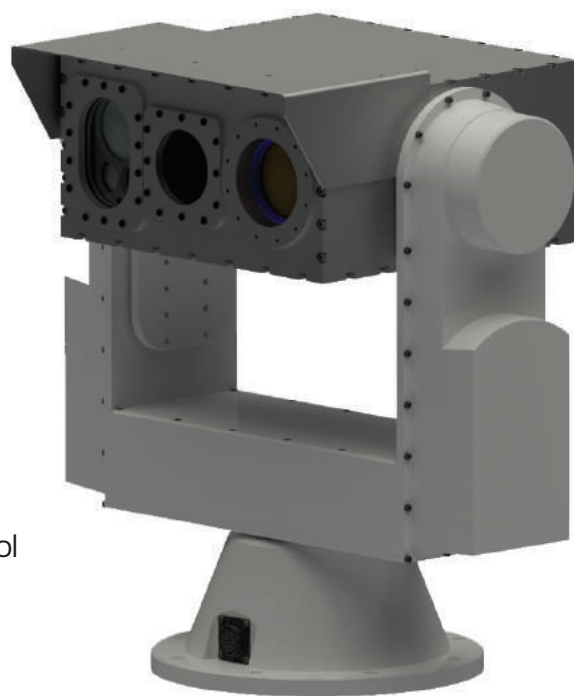


FEATURES

- Advanced 3rd gen Uncooled Thermal Sensor 640x480p
- Thermal Lens 15mm - 280mm (custom - optional)
- Laser Rangefinder up to 10km
- Day Camera Full HD 1080p 10mm - 1000mm
- Control Station - 19" XGA Display Monitors - Joystick Control
- Gyro stabilized Pan-Tilt (available as an option)
- Software Control - OSD Text & Graphics ability
- Communication Protocol : RS 2422/485/232

BENEFITS

- Cost effective unrivaled surveillance against threats
- 360-degree panoramic coverage with a single detector
- High quality, 24/7 long range imaging capabilities
- Day & night performance even in adverse conditions
- Automatic, simultaneous tracking of threats
- Gyro stabilized module for mobile applications
- Stand-alone caostal and border security solution



APPLICATIONS

- Coastal and border surveillance
- Maritime wide area surveillance
- Ports protection
- Fight against maritime piracy
- Night time navigation
- Search and rescue

FULLY AUTOMATED COSTAL BORDER & MARITIME SURVEILLANCE MONITORING SYSTEM

SPECIFICATIONS

● THERMAL CAMERA

Sensor Type	Uncooled Thermal Sensor
Resolution	640 x 512,15 um InSb FPA
Frame Rate	Up to 30Hz
Spectral Responce	7 to 14 microns
Focus Range	10m to infinity

● DAY CAMERA

Sensor Type	1/2.8" CMOS Sensor Full HD 1080p
Optical Zoom	20x (up to 240x With Digital Zoom)

● LASER RANGER FINDER

Measurement Range	Up to 10Km
Measuring Rate	0.5 - 10Hz
Wavelength	1550nm Eye Safe
Laser Life Time	More than 500,000 measurements

● CONTROL STATION

Monitor	19"XGA Display
User Input	Joystick and Touchscreen
Recording	Video & Photo recording, Day & Thermal
Modes	Manual or Auto Tracking
Controls	IR Polarity, IR Filter, Contrast, Brightness, Target Tracking, Zoom
On-screen Indicators	Polarity, Zoom level, Digital magnetic compass bearing, LRF distance

● POWER

Ship Power	115V or 220V AC, 50/60Hz
UPS Protection	Double Conversion

● ENVIRONMENTAL

Operation temperature	-25°C to +55°C
Standard	MIL-STD-810G
Waterproof	IP67
Material	Metal Anodized
Wind Resistance	120km/h (11 Beaufort)

● STANDARD FEATURES

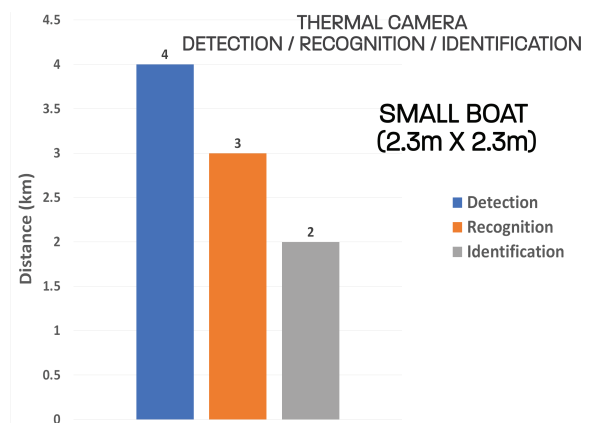
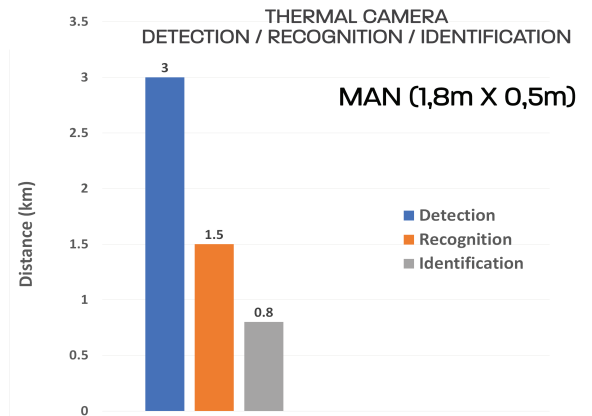
Control Stations	Master and Slave
Pan Tilt Range	360° horizontal, - 90° / +30° vertical
Pan Tilt Motion	Joystick Control or Stabilized

● OPTIONAL FEATURES

Control Station	Image and related information (Slave mode)
Interoperability	Radar and Fire Control System (FCS)
GPS	For Target Positioning through LRF & DMC

● DIMENSIONS

Sensor Weight	5900 gr
Pan-Tilt Weight	9000 gr
Size (LxWxH)	265 x 285 x 138 mm



FULLY AUTOMATED COSTAL BORDER & MARITIME SURVEILLANCE MONITORING SYSTEM