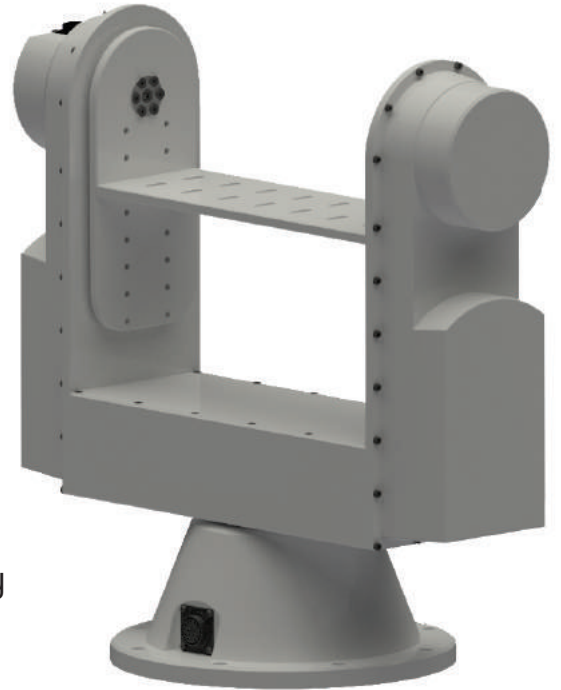


## HI-PTU100-DSG STABILIZED PAN - TILT UNIT

### KEY FEATURES

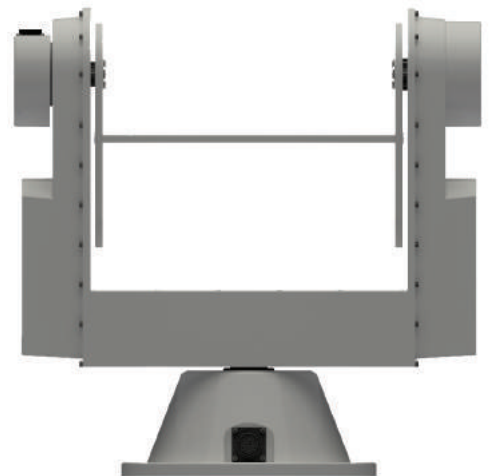
- High precision, real-time payload stabilization
- RS-232, RS-486, Ethernet Communication Interface
- Load capacity 25 pounds (11.3 kg)
- Fast speed response up to 150°/second
- Pan / Tilt Resolution up to 0.0028°
- Instantaneous position and speed changes
- Single DC power input (21-26VDC) suitable for battery
- Lightweight (26 lbs - 11.8 kg) & compact design



### APPLICATIONS

The HI-PTU100-DSG stabilized pan-tilt unit provides accurate gyro stabilization with a wide range of motion for precise observation and real-time positioning of cameras, lasers and other payloads.

Typical applications include long-range target acquisition for land and navy, and independent outdoor fixed or mobile surveillance.



## DUAL-AXIS GYRO STABILIZED PLATFORM MOUNTED SYSTEM FOR SEA, AIR AND GROUND APPLICATIONS

### HELLENIC INSTRUMENTS PC

**A** 3 Meteoron Street, 19400 Koropi, Greece

**T** +30 2106021630 **F** +30 210 6620514

**E** sales@hellenicinstruments.com

Copyright © 2017 - Hellenic Instruments - All rights reserved.  
<http://www.hellenicinstruments.com>

\*Important Notice: HELLENIC INSTRUMENTS reserves the right to change specification to reflect latest changes in technology and improvements at any time without notice. Export is subject to Greek Government regulations.

## HI-PTU100-DSG STABILIZED PAN - TILT UNIT

### OVERVIEW

The HI-PTU100-DSG (Dual Stabilization Gyroscopes) offers high precision, user-controlled position and speed movements for payloads up to 25 pounds. Stabilization and real-time control is achieved using precise stepper motors, suitable for intense applications in all weather conditions. A fully integrated design provides unparalleled system reliability and effortless integration to existing systems, minimizing integration and development costs.

### SPECIFICATIONS

Payload capacity	25 lbs (11.3 kg)
Pan range of motion	continuous 360° motion with slip ring (user programmable limits available)
Tilt range of motion	+80° to - 130° (210° range) (user programmable limits available)
Position resolution (pan/tilt)	0.0028°
Pan / Tilt speeds (min – max)	< 0.0028°/sec - 150°/sec
Host interfaces	RS-232, RS-485, Ethernet
Payload pass-through wiring	3 x 5Amps (power lines) 11 x 2Amps (signal lines)
Input voltage	21-26VDC with protection up to 1,000VDC
Power Consumption	2Amps @24VDC continuous
Weight	26 lbs (11.8 kg)
Operating Temperature	-30°C to +70°C
Weatherization	IP67
Shock/Vibe	MIL-810F

### OPTIONS & ACCESSORIES

Connection cables	Custom Cables, Breakout cables (Top & Bottom connections)
Connector accessories	90° angle connector, Custom Connector Kits
Power Supply Unit	AC 220 - 240V ~50Hz to 24VDC 5Amps

## DUAL-AXIS GYRO STABILIZED PLATFORM MOUNTED SYSTEM FOR SEA, AIR AND GROUND APPLICATIONS

#### HELLENIC INSTRUMENTS PC

A 3 Meteoron Street, 19400 Koropi, Greece

T +30 2106021630 F +30 210 6620514

E sales@hellenicinstruments.com

Copyright © 2017 - Hellenic Instruments - All rights reserved.

<http://www.hellenicinstruments.com>

\*Important Notice: HELLENIC INSTRUMENTS reserves the right to change specification to reflect latest changes in technology and improvements at any time without notice. Export is subject to Greek Government regulations.